

# Parkheath

*Sold on Service*

**Glenmore Road NW3**  
**£775,000**

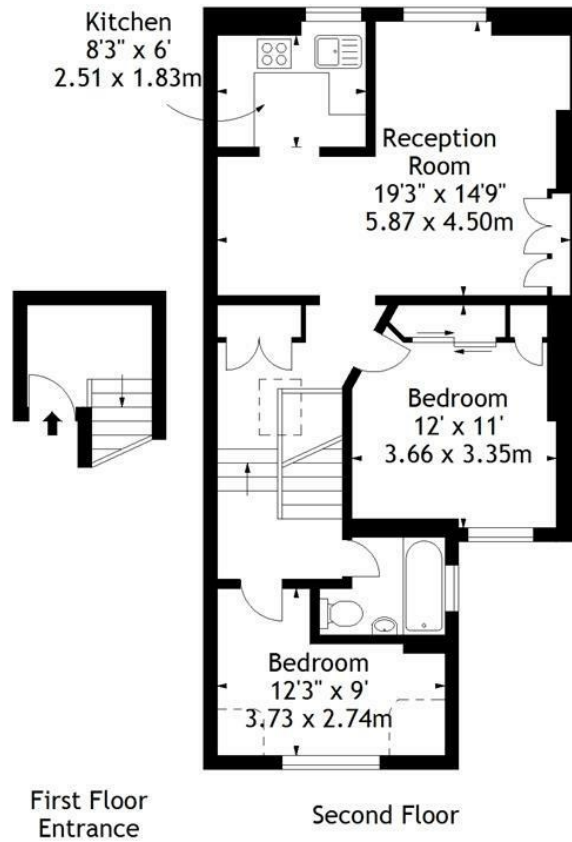


Extremely bright, well proportioned flat  
2 double bedroom split level  
Top floor flat (2nd) close to 700 sq ft  
Attractive period conversion  
Share of freehold

19ft L shaped reception  
8ft kitchen with window  
12ft main bedroom with wardrobes  
No ongoing chain  
Moments from all Belsize Park amenities

Belsize Park Office 020 7431 3104

Glenmore Road, NW3  
Approx. Gross Internal Area  
697 Sq Ft - 64.75 Sq M



Measured in accordance with RICS guidelines. Every attempt is made to ensure accuracy, however all measurements are approximate. This floor plan is for illustrative purposes only and is not to scale.  
© Datography Ltd 2015  
Photographs \* Floorplans \* Virtual Tours  
Tel: 0845 643 4401 [www.datography.com](http://www.datography.com)

The particulars do not constitute part of an offer or contract. The particulars, including text, photographs and plans, are for the guidance only of prospective purchasers/tenants and must not be relied upon as statements of fact. The descriptions provided therein represent the opinion of the author and whilst given in good faith should not be construed as statements of fact. Nothing in these particulars shall be deemed a statement that the property is in good condition or otherwise or that any services or facilities are in good working order. All measurements are approximate